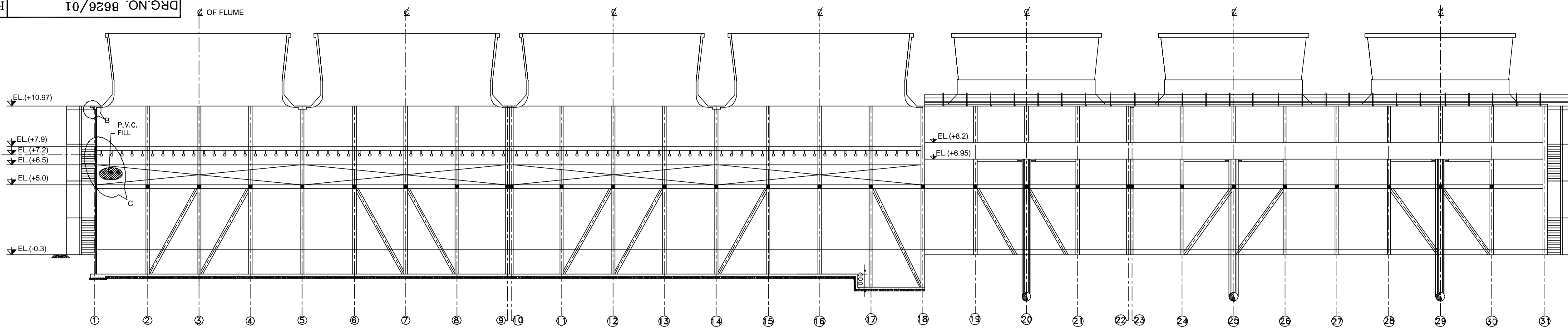
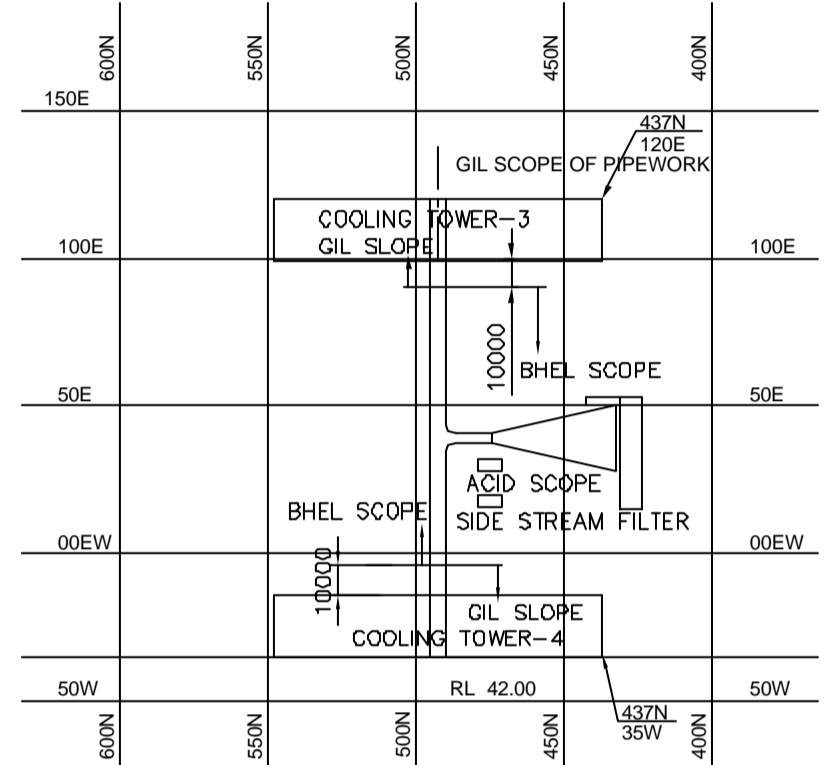


- NOTES:-**
- All dimensions are given in millimeters and levels in meters unless otherwise stated.
  - EL.+0.00 corresponds to RL.+43.3m
  - Max. water level shall be same as F.G.L.
  - Suitable approach & platform, handrails shall be provided in drain sump for lowering or lifting of owners portable sludge pumps.
  - Water proof bituminous paint conforming in to IS:9862 shall be provided to concrete surfaces in contact with water or subjected to water spray or subjected to alternate wetting and drying.
  - All exposed steel work shall be protected by hot dip galvanising & galvanised surfaces shall be further protected providing 2 coats of bituminous painting.
  - 1 No. trolley for shifting of gearbox/motor on the cooling tower at fan deck level shall be provided for each cooling tower.

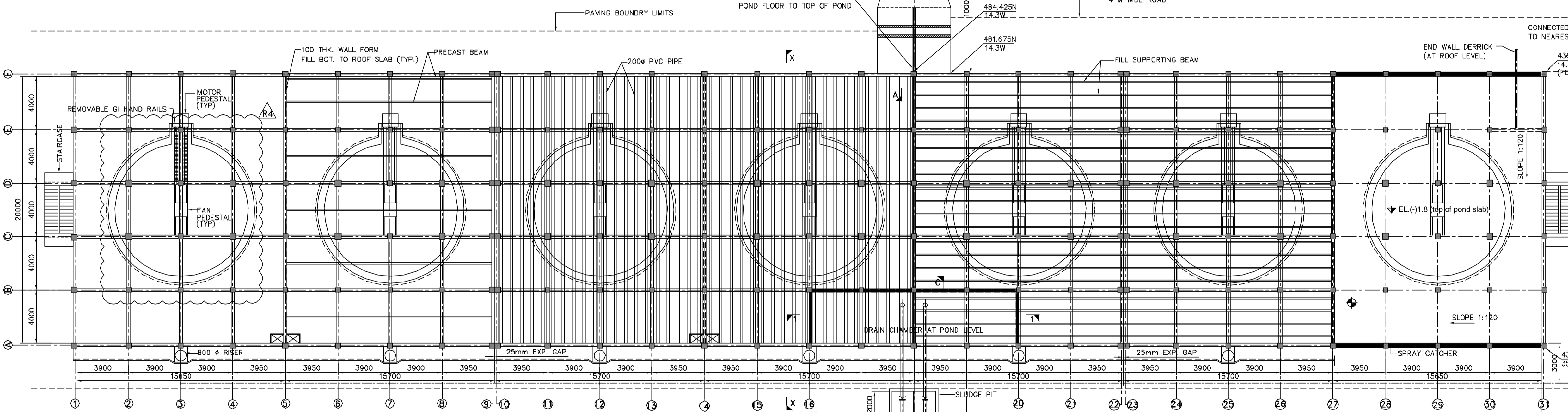


**HALF LONGITUDINAL SECTION**  
(SCALE 1:175)

**HALF LONGITUDINAL ELEVATION**  
(SCALE 1:175)



**KEY PLAN**  
(SCALE 1:2500)



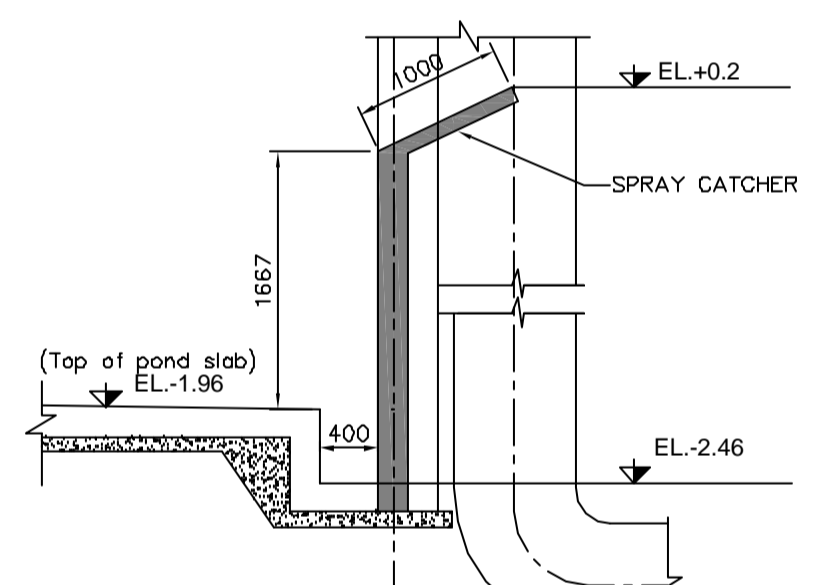
**PART PLAN AT ROOF LEVEL**  
(SCALE 1:175)

**PART PLAN AT DRIFT ELIMINATOR LEVEL EL.+7.9**  
(SCALE 1:175)

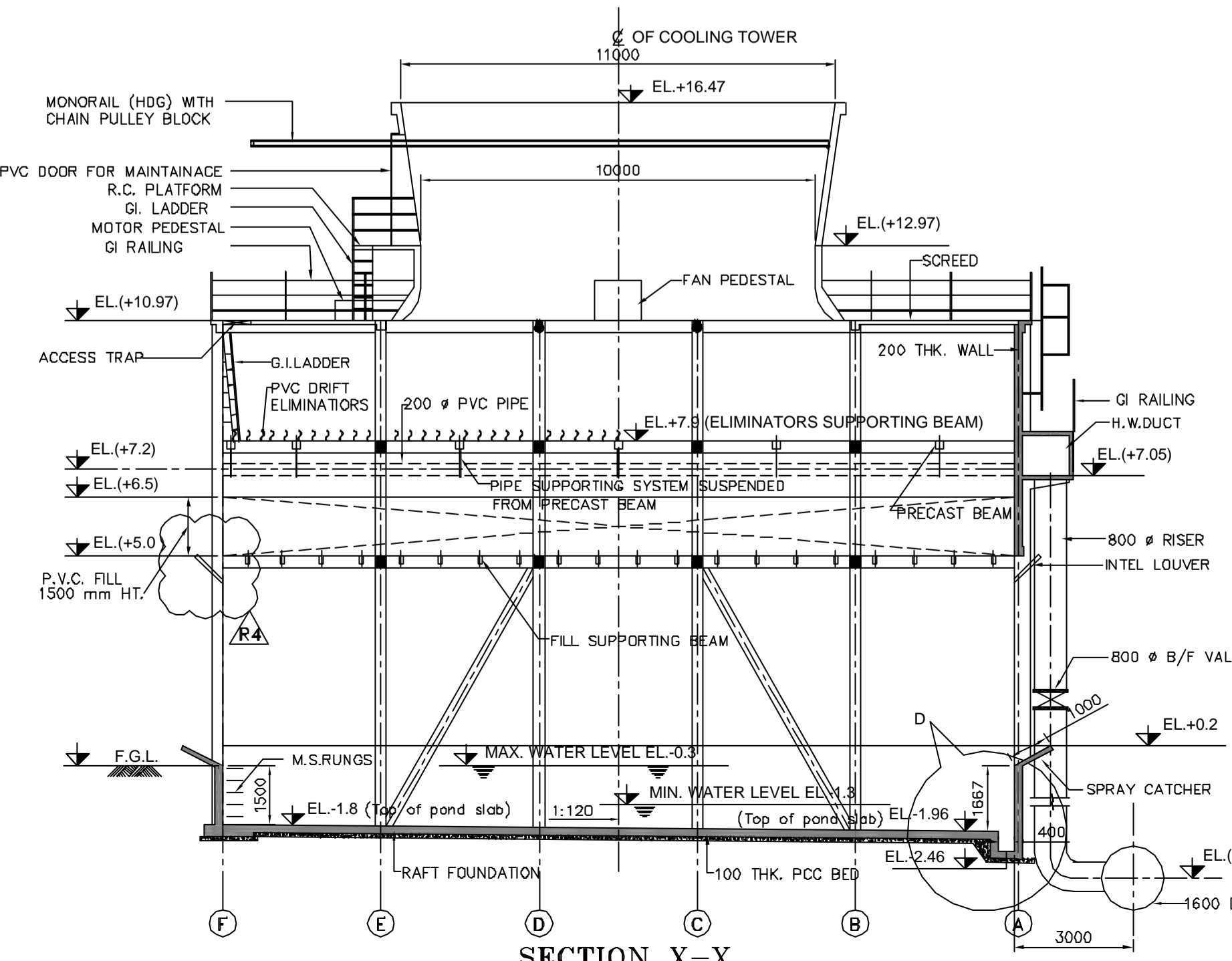
**PART PLAN AT EL.+7.3 LEVEL**  
(SCALE 1:175)

**PART PLAN AT FILL LEVEL EL.+5.0**  
(SCALE 1:175)

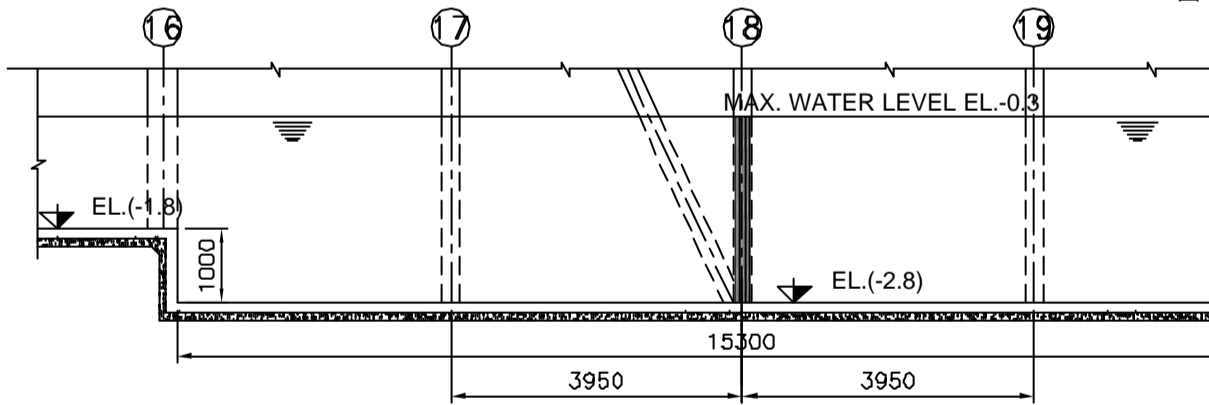
**PART PLAN AT POND LEVEL EL.-1.5**  
(SCALE 1:175)



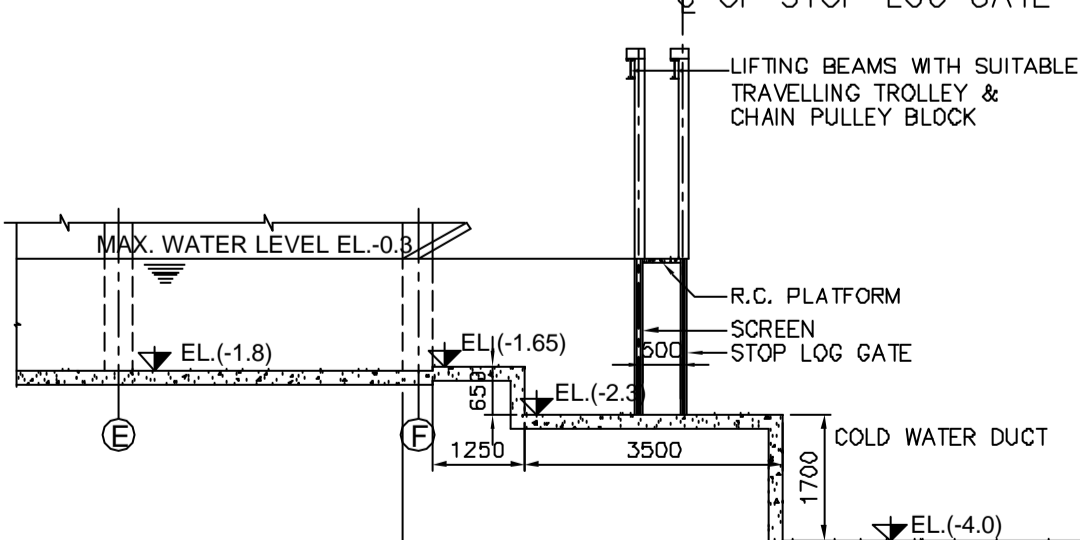
**DETAIL AT 'D'**  
(SCALE 1:50)



**SECTION X-X**  
(SCALE 1:125)



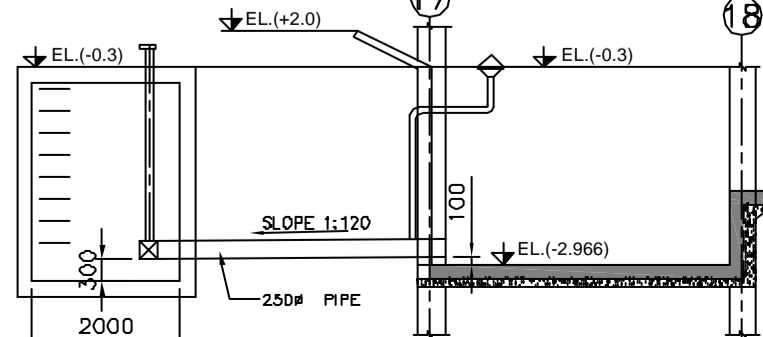
**SECTION 1-1**  
(SCALE 1:100)



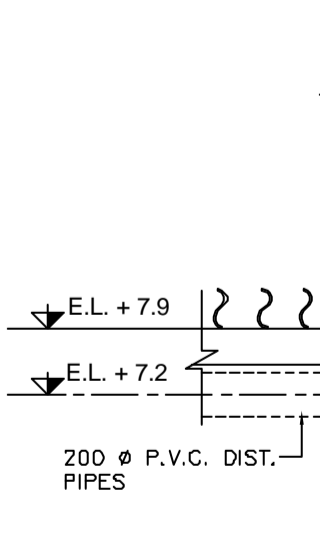
**SECTION A-A**  
(SCALE 1:100)

**DETAIL AT 'B'**  
(SCALE 1:20)

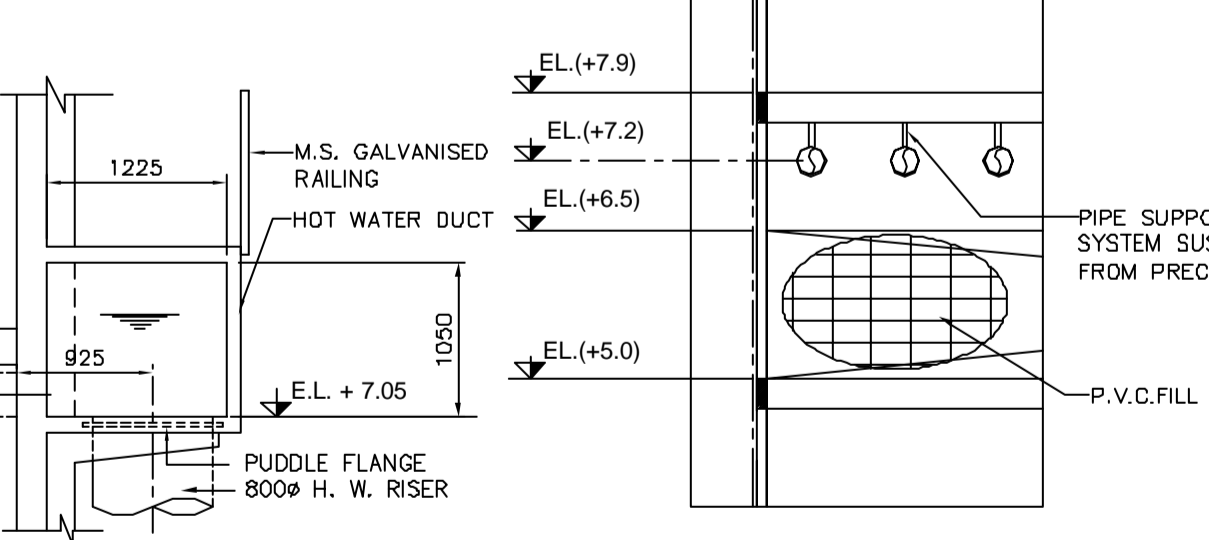
**SECTION B-B**  
(SCALE 1:100)



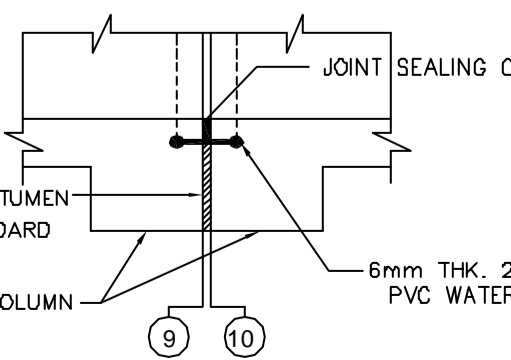
**SECTION C-C**  
(SCALE 1:100)



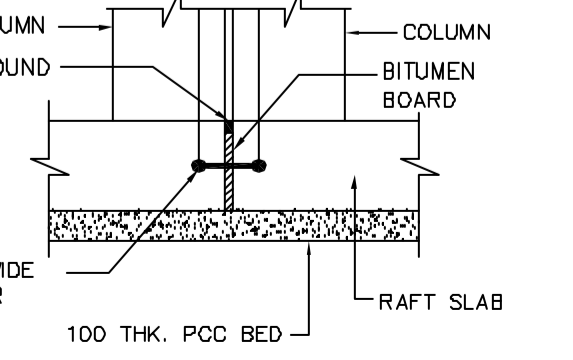
**DETAIL AT 'A'**  
(SCALE 1:50)



**ENLARGED DETAIL AT 'C'**  
(SCALE 1:75)



**ENLARGED PLAN AT EXPANSION GAP**  
(SCALE 1:25)



**SECTION THRU RAFT AT EXPANSION GAP**  
(SCALE 1:25)

DATE	REV.	CODE	DESCRIPTION	DRN.	CHKD.	APPD.
26/08/08	R4	D4	REVISED AS PER CHANGE IN POSITION OF MOTOR PEDESTAL	MMC	KMM	VNH
11/01/08	R3	D4	REVISED AS PER G.P. & T.C. COMMENTS	MMC	KMM	VNH
14/12/07	R2	D4	REVISED AS PER OUR LETTER NO. TMS/8626/01/064 DATED-11DEC-2007	MMC	SP	VNH
11/12/07	R1	D4	REVISED AS PER T.C. COMMENTS VIDE LETTER NO. TCR-4067A-10CT-07-BHEL (P.M.)-08 DATED-29NOV-2007	MMC	SPC	VNH
14/11/07	R0	D4	FOR APPROVAL	MMC	SPC	VNH

**REVISIONS**  
STATUS CODE: 1. PRELIMINARY COPY. 2. FOR REVIEWS. 3. MATERIAL PROCUREMENT. 4. FOR APPROVAL. 5. APPROVED FOR CONSTRUCTION.

**GUJRAT INDUSTRIES POWER COMPANY LTD.**  
**SURAT LIGNITE POWER PLANT (SLPP)**  
(2 x 125 MW EXPANSION PROJECT) (PHASE II) UNIT 3 & 4

CONSULTANTS  
**TATA CONSULTING ENGINEERS LTD. BANGALORE**

**BHARAT HEAVY ELECTRICALS LTD**  
POWER SECTOR  
PROJECT ENGINEERING MANAGEMENT  
NEW DELHI

**GAMMON INDIA LIMITED**  
ENGINEERS & CONTRACTORS

PROJECT: **TWO NUMBERS I.D. COOLING TOWERS FOR SURAT LIGNITE POWER PLANT (2 x 125 MW EXPANSION PROJECT) (PHASE II) UNIT 4**

DRG. No.- 8626/01	RO SERIAL NO.- 7335
APPROVED FOR CONSTRUCTION BY: <b>MUDDHA CN</b>	DEPT. CODE: <b>DESIGN</b>
DATE: <b>14-11-07</b>	NAME: <b>MUDDHA</b>
	SIGN: <b>SPC</b>
	DATE: <b>14-11-07</b>

TITLE: **GENERAL ARRANGEMENT OF COOLING TOWER & SCHEMATIC OF COOLING TOWER (3 & 4)**

SCALE: <b>AS SHOWN</b>	TEAM LEADER
SIGN: <b>[Signature]</b>	DATE: <b>14-11-07</b>
DATE: <b>14-11-07</b>	REV: <b>R4</b>